

Pest Profile

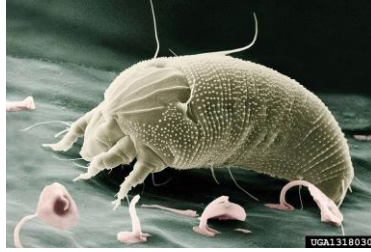


Photo Credit: Eric Erbe, USDA Agricultural Research Service, Bugwood.org (*Aceria* spp)

Common Name: Aloe Mite

Scientific Name: *Aceria aloinis*

Order and Family: Acari; Eriophyidae

Size and Appearance:

	Length (mm)	Appearance
Egg	1mm	White to clear colored eggs; very tiny and cannot be seen with the human eye.
Larva/Nymph	Mature nymphs 130 microns	Similar to the adult shape, although smaller.
Adult	.25mm	Worm like, whitish to purplish in color.
Pupa (if applicable)		

Type of Feeder: Piercing-sucking

Hosts Plants: Aloes

Description of Damage: The aloe mite chews on many types of flowers. This damage leads to aloe gall, which includes the weakening of the host plant and causes it to grow abnormally. Aloe mites do not kill the plant directly; however, eventually other pests utilize the host plant, and the other pests, in combination with the weakening of the plant from the aloe mite, leads to the plant's demise.

References:

Cranshaw, W. (2004). *The Ultimate Guide to Backyard Bugs: Garden Insects of North America*. Princeton, NJ: Princeton University Press.

Stein, Geoff. (2009). Aloe mite: The hidden scourge of the Mediterranean succulent garden. *Dave's Garden*. Retrieved from: <http://davesgarden.com/guides/articles/view/2145#b>.

Vacante, V. (2016). *The Handbook of Mites of Economic Plants. Identification, Bio-Ecology and Control*. Boston, MA: CAB International.

A. M. Boyce, R. B. Korsmeier (1941). The Citrus Bud Mite, *Eriophyes sheldoni* Ewing. *Journal of Economic Entomology*, 34 (6), 745-756